

# Flux Flow Monitor

**Provides excellent means of verifying repeatability and alarm monitoring capability**



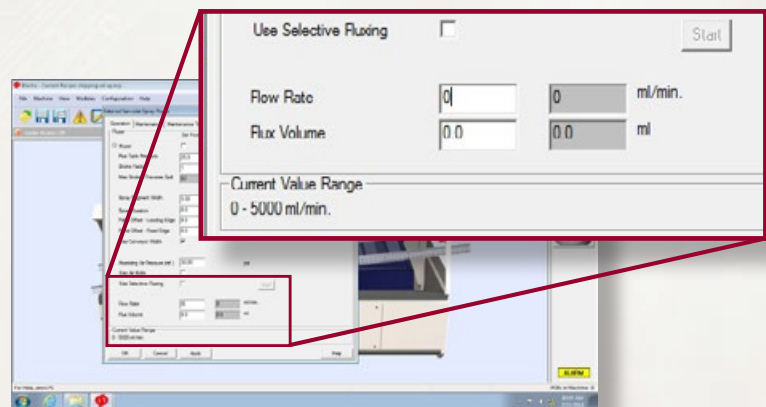
As Industry 4.0 continues to proliferate into PCB manufacturing, process control and data management within the fluxing process becomes increasingly critical.

Electrovert's flux flow monitor is intended for applications that flux flow verification is critical to the wave soldering process. The feature provides an accurate method of verifying repeatability of the flux flow rate and flux volume on a board-to-board basis.

The flux flow monitor uses an innovative non-contact type sensor. This approach allows the feature to be compatible across a broad range of flux types and spray technologies.

### Flux Flow Monitor Features:

- Compatible with a broad range of flux types:
  - Alcohol and water based
  - Low to high solid content
  - Mild to highly corrosive
- Available on Electra, VectraElite, and VectraES (single and dual-head type fluxers)
  - ServoJet
  - ServoSpray
  - ServoSonic
- Feature is field upgradable (check with the factory on vintage and configuration of machine)

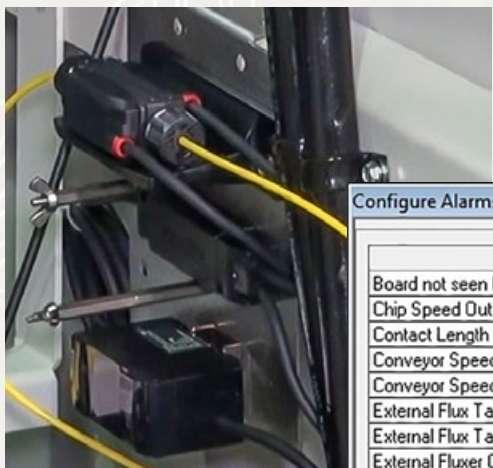


# Flux Flow Monitor

## Flux Flow Monitor Features:

- Easily configurable in machine software
- All critical flux monitoring parameters are integrated into machine software, are recipe dependent and captures data for MES data management purposes
- User defined alarm capabilities integrated into machine software:
  - Flow rates out of tolerance
  - Flow volumes out of tolerance
  - Restricted and leak detection alarms
- Each unit is programmed at the factory to allow an easy field upgrade installation

PROCESS & APPLICATION	SPECIFICATIONS
Flux Type Compatibility	Alcohol and water based Low to high solid content Mild to highly corrosive
Fluxer model offering	ServoSpray (single and dual-head fluxers) ServoJet (OA and non-OA) (single and dual-head fluxers) ServoSonic
Accuracy	+/- 1%
Controls	Integrated into machine software
Software	Compatible with Windows 7 and 10
Alarm settings	Percentage based and user defined
Origin	Camdenton, Missouri USA



The flux flow monitor sends alarms if flow rate is out of tolerance, flux line leak is detected, flux volume is out of tolerance, or fluxer flow is restricted.

Configure Alarms

Alarm Name	Action	Alarm Band	Repeat	Process Band	Units
Board not seen by Exit Sensor	Warning		<input checked="" type="checkbox"/>		
Chip Speed Out of Tolerance	Warning	25	<input type="checkbox"/>	15	rpm
Contact Length Position Stall Alarm	Warning		<input type="checkbox"/>		
Conveyor Speed Feedback Alarm	Soft-Stop		<input type="checkbox"/>		
Conveyor Speed Out of Tolerance	Warning	1.00	<input type="checkbox"/>	0.50	feet/min.
External Flux Tank A Level Low	Ignore		<input type="checkbox"/>		
External Flux Tank B Level Low	Ignore		<input type="checkbox"/>		
External Fluxer Communication Fault	Warning		<input type="checkbox"/>		
External Fluxer Flow Rate out of Tolerance	Warning	20	<input type="checkbox"/>	10	%
External Fluxer Flux Line Leak Detected	Soft-Stop		<input type="checkbox"/>		
External Fluxer Flux Volume out of Tolerance	Warning	20	<input type="checkbox"/>	10	%
External Fluxer Restricted Flow Detected	Warning		<input type="checkbox"/>		
External Fluxer Servo Controller COMM Fault	Warning		<input type="checkbox"/>		
External Fluxer Solvent Level Low	Ignore		<input type="checkbox"/>		
External Fluxer Solvent Purge Required	Warning		<input type="checkbox"/>		
External Fluxer not On!!!	Warning		<input type="checkbox"/>		

Repeat Time  minutes

Current Value Range

OK Cancel Apply Help

ITW EAE is a division of Illinois Tool Works, Inc. It is a consolidation of all of its Electronic Assembly Equipment and Thermal Processing Technology. The group includes world-class products from MPM, Camalot, Electrovert, Vitronics Soltec and Despatch.

© 2021 ITW all rights reserved. Flux Flow Monitor 4-2021

[www.itweae.com](http://www.itweae.com)

# Electrovert

Cleaning & Soldering Solutions

ITW EAE